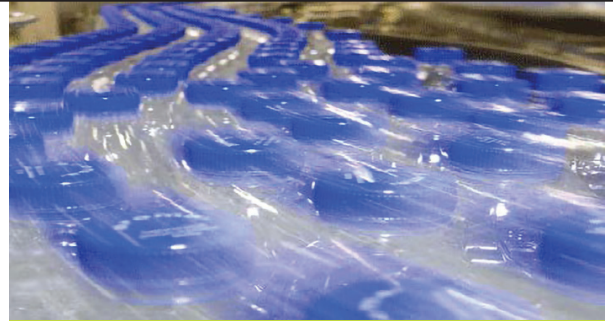


Kosme enhances visualization and reduces engineering time by standardizing on Emerson SCADA/HMI platform

RESULTS

- Improved machine user interface graphics
- Reduced engineering time
- Reduced planning, management and maintenance costs
- Simplified training and testing



APPLICATION

Supervisory systems for custom packaging and beverage machine and production lines.

CUSTOMER

Kosme s.r.l. – Lombardy, Italy

Kosme designs and manufactures a broad range of industrial packaging and beverage machines.

CHALLENGE

In response to the growing demand for complete turnkey beverage and packaging production line solutions and the need to connect different HMIs, Kosme decided to develop its own supervisory systems. Kosme wanted to standardize on a single open solution that would help to reduce engineering time, and provide a unified approach that simplified training its employees and testing. It has also become essential for machine manufacturers such as Kosme to use SCADA/HMI systems that allow them to create user interfaces with graphics and a rich variety of functions that make their machines more intuitive for operators to manage.

SOLUTION

Based on previous experience, Kosme decided to use Emerson's Movicon SCADA/HMI platform to develop its supervisory system. Movicon met Kosme's modularity, potentiality and cost requirements, while its deployment flexibility was fundamental to Kosme's strategy of building systems based on both Windows CE and Windows XP Embedded. The first use of Movicon was for a HMI project to provide visualization on a packaging line based on its modular Flypack shrinkwrapper machine, which included a product compacter unit, wrapping unit and heat shrinker tunnel.

“Project modularity is an important factor. By using Movicon, projects can be centralized or distributed, allowing us to deploy fewer resources to planning and maintenance of our various machines.”

Mr Rondelli
Engineer from Kosme R&D group

For this and other machines, the Movicon XML projects were ideal and fitted nicely with the need for graphical interface and functions both for Win32 and WinCE. This meant no compilation or exportation and therefore was much easier and cheaper to run. Movicon also offers ready-to-use solutions which have allowed Kosme to satisfy all types of customer requests. These include support for dynamic language change in any project string type and character, user and password protection management compliant to FDA CFR21 Part 11 regulations, and important alarm notifications by SMS or email. A range of optional functions can also be enabled using existing licenses without requiring additional installations or modifications to projects. Features that have been very beneficial include trackers, production reporting and statistics, and the Movicon Web Client technology that enables secure authorized access to the HMI system using any internet browser.

Movicon has outperformed previous SCADA solutions in terms of technology, service and system costs. Planning, management and maintenance costs are also lower. Movicon's openness and modularity have made it safe and low-cost to implement and operate, ensuring a fast return on investment. The efficient and responsive technical support for programmers and project engineering teams provided by Emerson also gave Kosme the confidence to experiment and provided a competitive advantage.

RESOURCES

Emerson industrial automation and controls

www.Emerson.com/PACSystems

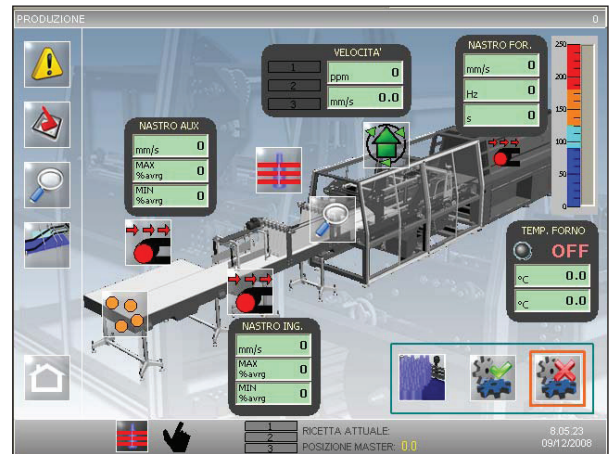
Movicon

www.Emerson.com/Automation-Software

“The innovative Movicon technology is very impressive, with its openness and extreme simplicity-of-use making a great impact on us. We have been able to create user interfaces with vastly improved graphics that look very realistic, which together with the additional functionalities are difficult to find in any other SCADA system.”

Mr Rondelli

Engineer from Kosme R&D group



Emerson's Movicon software visualizes the Kosme Flypack machine.

©2021, Emerson. All rights reserved.

The Emerson logo is a trademark and service mark of Emerson Electric Co. All other marks are the property of their respective owners.

The contents of this publication are presented for informational purposes only, and while diligent efforts were made to ensure their accuracy, they are not to be construed as warranties or guarantees, express or implied, regarding the products or services described herein or their use or applicability. All sales are governed by our terms and conditions, which are available on request. We reserve the right to modify or improve the designs or specifications of our products at any time without notice.

Contact Us

www.emerson.com/contactus

For more information:
www.emerson.com/PACSystems